

G-FLEX TURBO



701 White



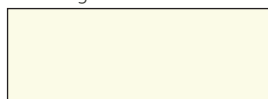
714 Purple



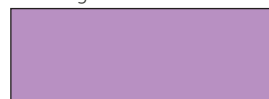
702 Black



717 Beige



728 Bright Lavender



719 Lemon Yellow



765 Sky Blue



720 Gold Metallic*



773 Flame Red



727 Bright Blue



718 Medium Yellow



706 Royal Blue



730 Silver Metallic*



761 Baby Pink



726 Bright Red



710 Yellow



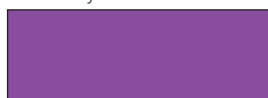
705 Navy Blue



703 Neon Blue*



787 Berry



725 Bright Pink



715 Orange



767 Apple Green



740 Neon Yellow*



768 Aqua Green



729 Coral



708 Red



704 Green



741 Neon Green*



777 Mint



721 Bright Gold



762 Fuchsia



716 Brown



742 Neon Orange*



744 Neon Red*



724 Bright Copper



709 Bordeaux



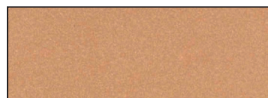
712 Gray



743 Neon Pink*



722 Rose Gold



731 Bright Silver



*Starred colors cannot be layered beneath another product



Cotton	Cotton/ Polyester (blend)	Nylon
3.0 bar (medium pressure) 265° F, 5 sec. 300° F, 4 sec. 320° F, 3 sec.	2.0 bar (low pressure) 300° F • Pre-heat 5 sec. • Apply to nylon 5 sec. • Remove PET liner, cover transfer with silicon paper & apply for further 10 sec.	



Features

G-FLEX TURBO is a versatile heat transfer designed with a special hot melt for fast application at low temperatures to prevent pressure marks (plate imprints) on polyester fabric with microfiber structure. G-FLEX TURBO is designed to adhere to textiles like cotton, polyester, uncoated nylon, mixtures of polyester/cotton and polyester/acrylic. G-FLEX TURBO is great for T-shirts, sports and leisure wear, sports bags and promotional articles.

The raw materials in G-FLEX TURBO are ecologically inert, do not contain PVC, plasticizers or heavy metals (in accordance with OEKO-TEX STANDARD 100 category 1 and CPSIA Compliant).

Application Instructions

Plotter Settings

Blade: 45°
Cut Style: Cut this material in mirror image

Transfer Conditions

Temperature: 265° F — 320° F
Pressure: Low pressure (2.0 bar) —
Medium pressure (3.0 bar)
Time: Varies depending on temperature and
substrate (see application chart)
Peel: Warm peel
Neon colors (703, 740 — 744) lukewarm peel

Wash Resistance

Hot wash 140° F
Wash garment inside out
Suitable for tumble drying (commercial tumble dryer up
to 212° F) and dry-cleaning

Color Range

40 Colors

Standard Dimensions

15" x 5 yd 20" x 5 yd
15" x 10 yd 20" x 10 yd
15" x 30 yd 20" x 30 yd

Exclusively from GRIMCO®

Corporate Office: US
11745 Sappington Barracks Road
Sunset Hills, MO 63127

800.542.9941
www.grimco.com

Corporate Office: Canada
680 Steeprock Drive
Toronto, ON M3J 2X1

800.263.1421
www.grimco.ca

*Nylon that is treated with any kind of coating, please test for stability.
*Please consider adjusting the application time when using highly
structured cotton and cotton mixture fabrics.

